



// M T-1	// M T-2
USER MANUAL + INSTALLATION GUIDE	RT2601
M-SERIES ELECTRIC OUTBOARD MOTORS	

Momentum M-SERIES Remote System installation manual

This manual describes in detail the installation of the Momentum Remote Throttle and Remote Steering System for use with Momentum M-Series electric outboard motors.

Please read this manual comprehensively as it contains crucial information on set-up, operation, maintenance and safety. By using this Momentum product, it is deemed that you have read and understood the contents of this user guide and Momentum accepts no liability in the event of misuse of this product.

This manual should be read in conjunction with the M-Series Electric Outboard User Manual and the MB-6 Battery User Manual.

We reserve the right to update this user guide in-line with any evolution of this product.

Please visit our website for the latest version of this user guide.



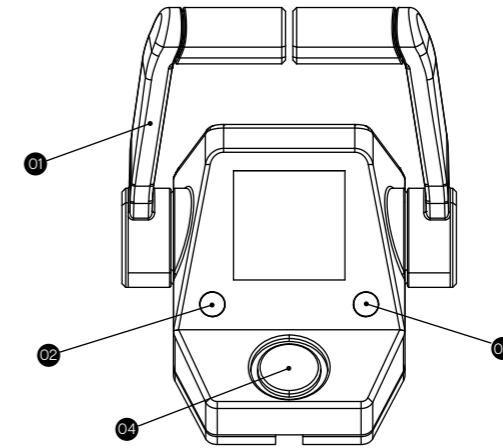
www.momentumelectricmarine.com

CONTENTS

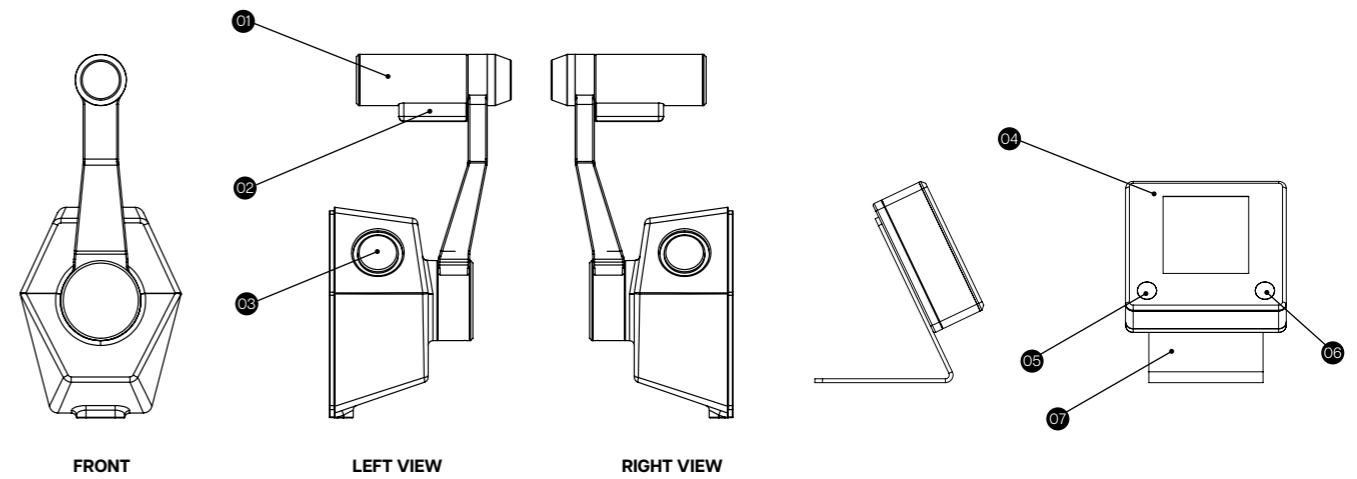
ANATOMY	3
INSTALLATION	8
INSTALLING THE STEERING CYLINDER TO OBM MOUNT	10
INSTALLING THE OBM MOUNT TO BOAT TRANSOM	10
INSTALLING THE REMOTE STEERING ADAPTER TO THE OBM(S)	11
INSTALLING THE OBM(S) TO THE OBM MOUNT	13
CONNECTING THE STEERING ADAPTER TO THE STEERING SYSTEM	14
CONNECTING THE REMOTE POWER CABLE	16
INSTALLING THE REMOTE THROTTLE	18
CONNECTING THE REMOTE THROTTLE TO THE REMOTE CABLE	22
SETTING UP THE REMOTE THROTTLE	24
SETTING UNITS AND TIME REMAINING	28
TROUBLESHOOTING	29
USER NOTES	30

ANATOMY

- 01 Throttle lever
- 02 Menu/Select button
- 03 Units selection/Scroll button
- 04 Killswitch ring



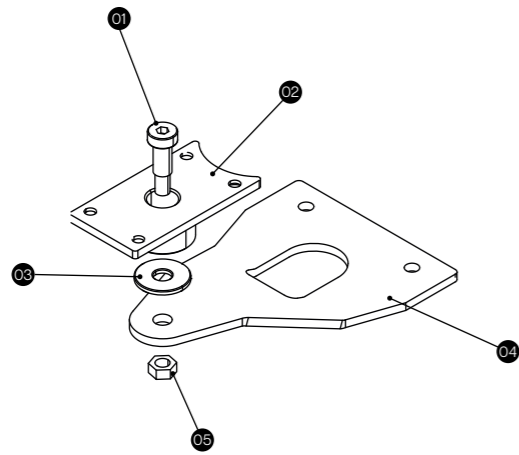
ANATOMY MT-1 TOP MOUNT REMOTE THROTTLE



- 01 Throttle lever
- 02 Throttle lever release
- 03 Killswitch ring

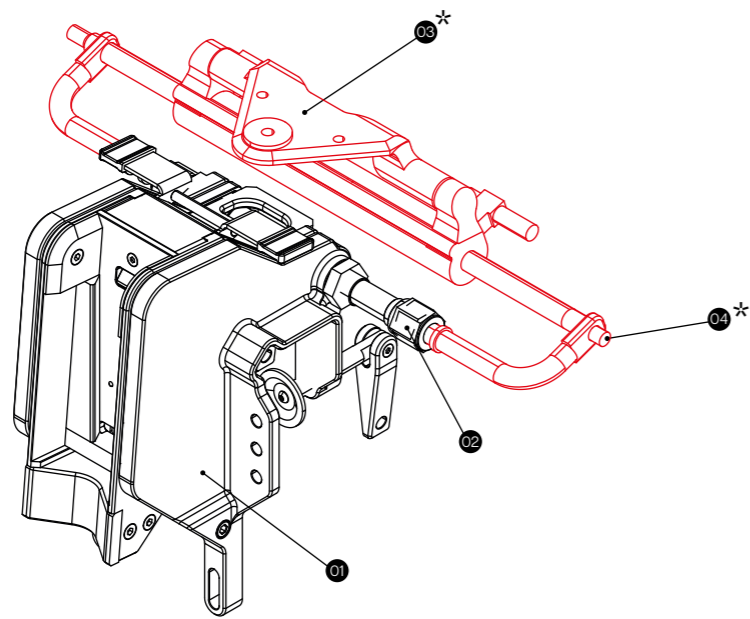
- 04 Remote display unit
- 05 Menu/Select button
- 06 Units selection/scroll button
- 07 Remote display stand

ANATOMY MT-2 SIDE MOUNT REMOTE THROTTLE



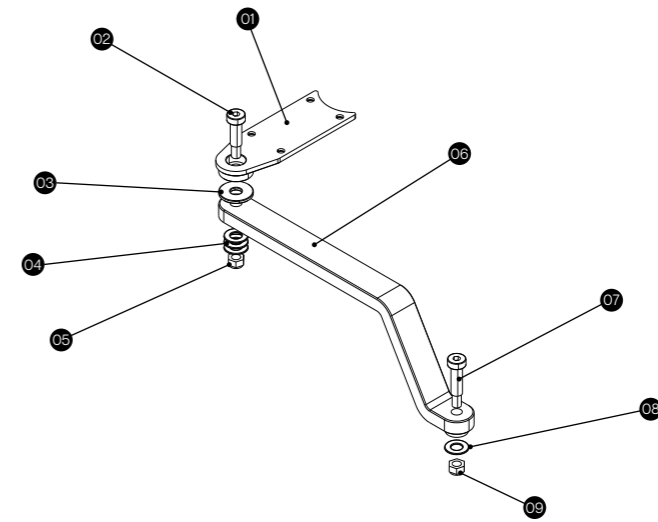
- 01 Shoulder bolt
- 02 Pivot mount plate
- 03 Spacer
- 04 Interface plate
- 05 Nylon locknut

ANATOMY M-SERIES REMOTE STEERING ASSEMBLY (HYDRAULIC)



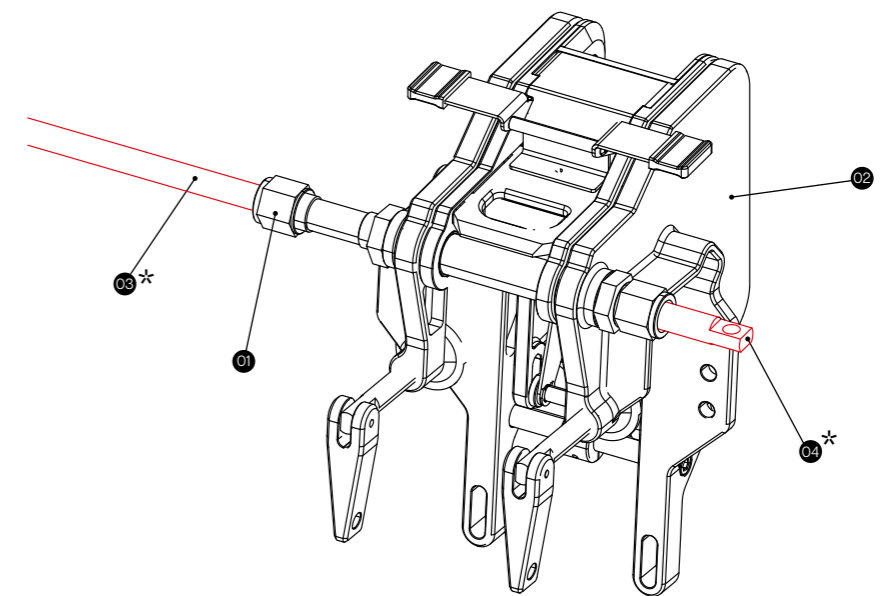
- 01 M-SERIES transom mount
- 02 Mount nut
- 03* Hydraulic steering cylinder pivot plate
- 04* Hydraulic steering cylinder

ANATOMY M-SERIES TRANSOM MOUNT (*SHOWN WITH 3RD PARTY HYDRAULIC STEERING CYLINDER)



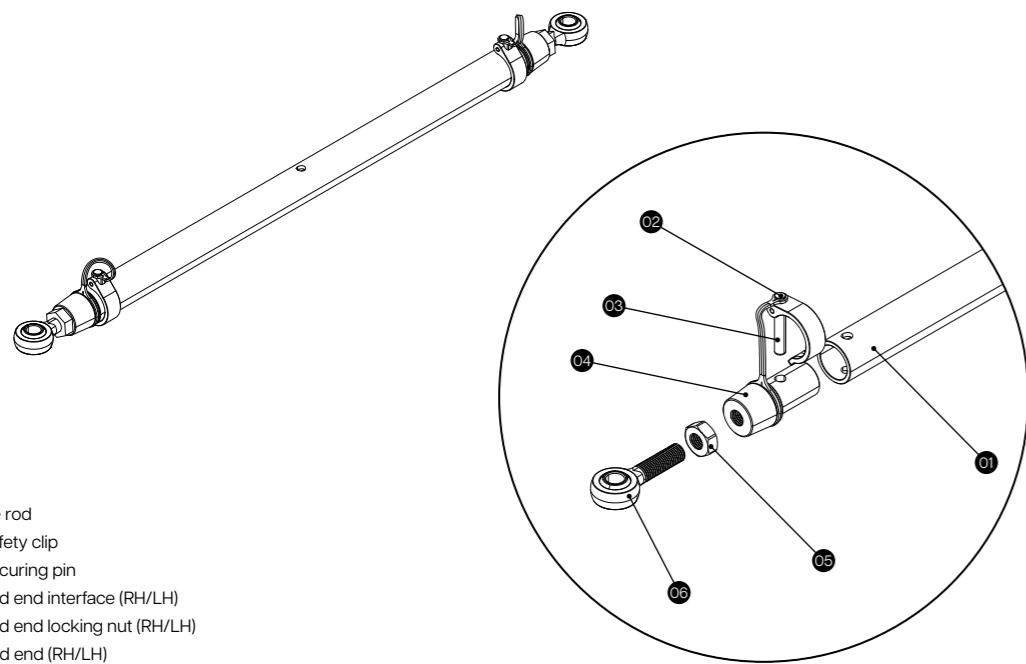
- 01 Pivot mount
- 02 Shoulder bolt (Metric - 10X25, M8)
- 03 Remote spacer
- 04 Spacer
- 05 Nylon locknut (Metric - M8)
- 06 Steering link arm
- 07 Shoulder bolt (Imperial - 3/8X1-1/4 (5/16-18 thread))
- 08 Spacer
- 09 Nylon nut (Imperial - 5/16-18 thread)

ANATOMY M-SERIES REMOTE STEERING ASSEMBLY (CABLE)



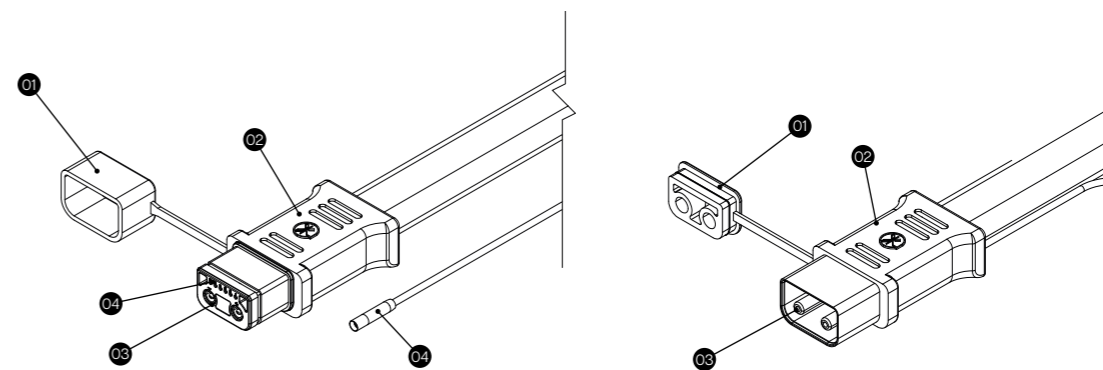
- 01 M-SERIES transom mount
- 02 Mount nut
- 03* Steering Cable
- 04* Push-pull rod

ANATOMY M-SERIES TRANSOM MOUNT (*SHOWN WITH 3RD PARTY CABLE STEERING)



- 01 Tie rod
- 02 Safety clip
- 03 Securing pin
- 04 Rod end interface (RH/LH)
- 05 Rod end locking nut (RH/LH)
- 06 Rod end (RH/LH)

ANATOMY M-SERIES TWIN STEERING TIE ROD (HYDRAULIC APPLICATION ONLY)

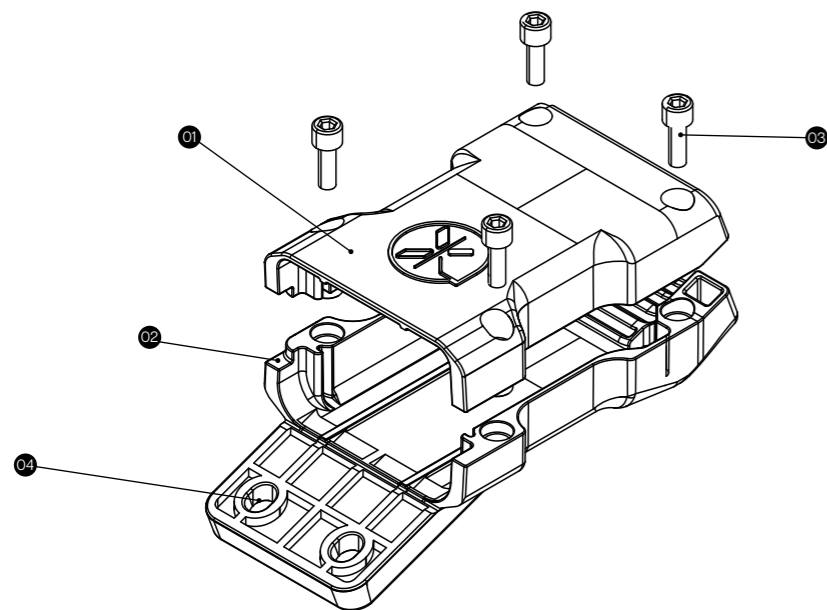


FEMALE END

MALE END

- 01 Weather cap
- 02 Connector body
- 03 Power connector
- 04 Signal connector
- 05 6-pin remote connector

ANATOMY M-SERIES REMOTE CABLE



- 01 Remote cable clamp (upper)
- 02 Remote cable clamp (lower)
- 03 Clamp screws
- 04 OBM mounting hole

ANATOMY M-SERIES REMOTE CABLE CLAMP

INSTALLATION

TOOLS & PARTS REQUIRED

Standard metric hand tools are required for the tasks.

- Full allen key wrench set
- Full socket wrench set
- Full wrench set
- *Imperial allen key wrench is supplied with remote steering kit (cable)

Consumables required are:

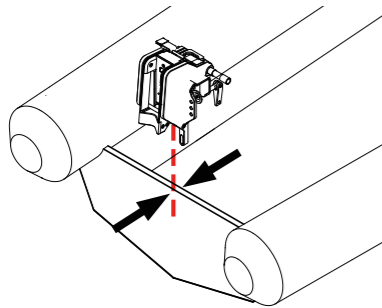
- Tefgel anti-corrosion/anti-seize
- marine grease
- marine sealant

Parts not supplied by Momentum:

Hydraulic steering cylinder—The recommended hydraulic cylinder is the BayStar H4647-3 Hydraulic Cylinder, with HA4641 Kit Plate. If you have a different existing hydraulic steering cylinder, please consult your dealer.

Rotary steering cable - The recommended steering cable is Seastar SSC6213 Quick Connect Rotary Steering Cable or equivalent. If you have a different existing steering cable, please consult your dealer.

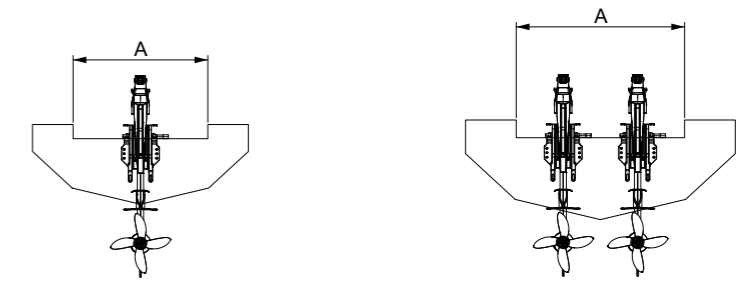
PRE INSTALLATION CHECK



Transom thickness

For single and twin OBM installations, ensure that there is adequate transom thickness as shown below.

Transom Thickness Range	
Minimum	3.81cm (1.5 in.)
Maximum	6.8cm (2.65 in.)



Single OBM installation

Twin OBM installation

Transom opening

The minimum transom opening required is determined by the maximum steering angle and whether the tiller is installed.

The M10 is capable of a maximum steering angle of +/- 60 degrees. To achieve the full range of steering, the minimum transom openings for a single and twin OBM installation are shown below.

Minimum Transom Opening (A)	
Single Remote OBM without tiller	75cm (29.6 in.)
Single Remote OBM with tiller	81cm (31.9 in.)
Twin Remote OBM without tiller	125cm (49.2 in.)
Twin Remote OBM with tiller	131cm (51.6 in.)

IMPORTANT SAFETY NOTICE

Should there be insufficient transom opening on the boat to achieve the maximum steering angle of +/- 60 degrees, the maximum steering angle must be limited on the hydraulic steering cylinder to an angle that avoids contact between the OBM and the hull, and between port and starboard OBMs, in the case of a twin OBM installation.

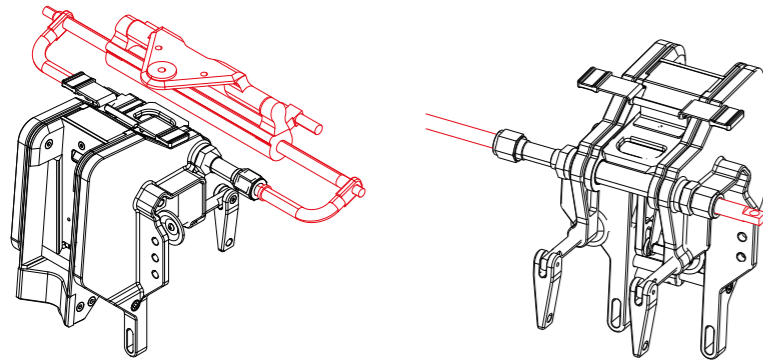
Minimum Transom Opening (A) *LIMITED STEERING ANGLE = +/-45°!!*	
Single Remote OBM with or without tiller	46cm (18.1 in.)
Twin Remote OBM with or without tiller	88cm (34.7 in.)

OBM INSTALLATION

Follow the relevant icon for the installation applicable to your use case.

- SINGLE OBM SET UP (HYDRAULIC)** ■
- SINGLE OBM SET UP (CABLE)** ●
- TWIN OBM SET UP (HYDRAULIC)** ▲

STEP 1: INSTALLING THE STEERING CYLINDER TO OBM MOUNT



Hydraulic: Single mount / Twin Master Mount



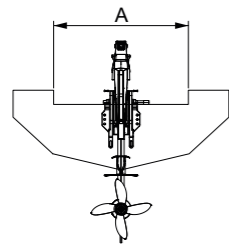
Dia. 1.A

Cable: Single mount

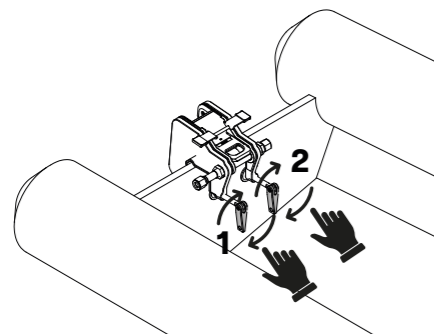


- 1.1. Install the hydraulic steering cylinder / cable steering onto the transom mount according to the hydraulic steering cylinder / cable steering manufacturer's instructions. (Dia. 1.A)
- 1.2. Connect the hydraulic hose / steering cable to the steering helm, according to the manufacturer's instructions.

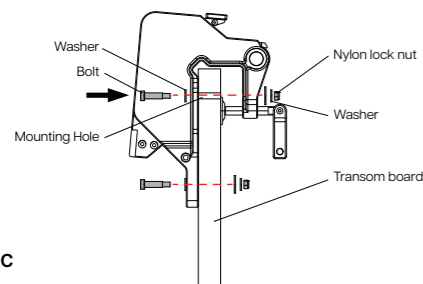
STEP 2: INSTALLING THE OBM MOUNT TO BOAT TRANSOM



Dia. 2.A



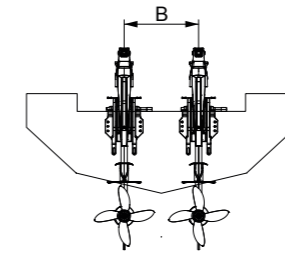
Dia. 2.B



Dia. 2.C

■ ● SINGLE TRANSOM MOUNT

- 2.1. Install the mount dead-centre to the transom of your boat as shown in the diagram. (Dia. 2.A)
- 2.2. Secure the mount clamps to the transom with hand tightness. (Dia. 2.B)
- 2.3. In addition, the mount can be bolted onto the transom via the bolt holes on the transom mount, using 4 bolts. (Dia. 2.C)
- 2.4. Apply a suitable silicon sealant (Fixall Flexi or equivalent) to the mounting holes on the transom and the transom mount.
- 2.5. Secure the transom mount with the bolts, washers and locknuts. Apply the specified torque for the bolt/nut that is also suitable for the boat transom strength to avoid damage to the transom.



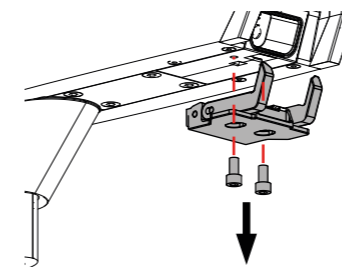
Outboard-to-Outboard Centreline (B)	
Twin Remote OBM	50 cm (19.7 in.)

*IMPORTANT SAFETY NOTICE

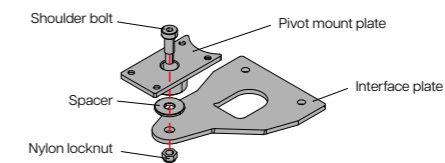
Should there be insufficient transom opening on the boat to achieve the maximum steering angle of +/- 60 degrees, the maximum steering angle must be limited on the hydraulic steering cylinder to an angle that avoids contact between the port and starboard OBMs. For a +/- 45 degree steering angle, achieved by limiting the hydraulic steering cylinder, the minimum Outboard-to-Outboard Centreline distance (B) is shown below.

Minimum Outboard-to-Outboard Centreline (B) *LIMITED STEERING ANGLE = +/-45!!*	
Twin Remote OBM	42cm (16.5 in.)

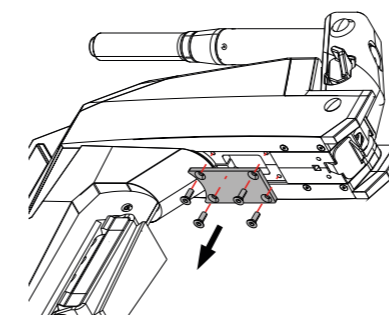
STEP 3: INSTALLING THE REMOTE STEERING ADAPTER TO THE OBM(S)



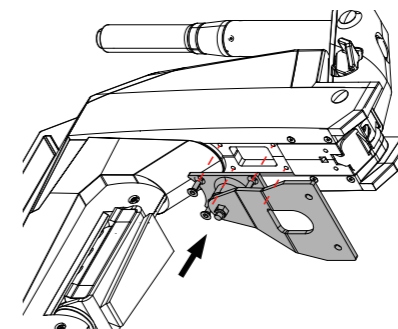
Dia. 3.A



Dia. 3.B



Dia. 3.C



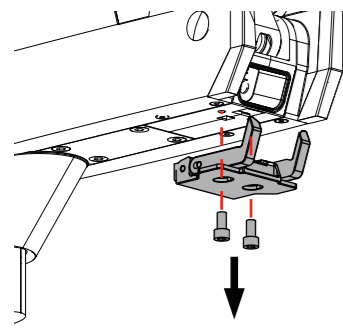
Dia. 3.D

▲ TWIN TRANSOM MOUNTS

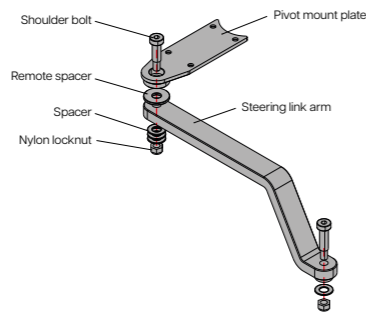
- 2.6. Install the transom mounts equal distance away from the centre of the transom, with the Outboard-to-Outboard Centreline distance (B) as shown below.
- 2.7. Secure the transom mounts as per single OBM installation. (Step 2.1 - 2.5)

■ SINGLE HYDRAULIC ADAPTER

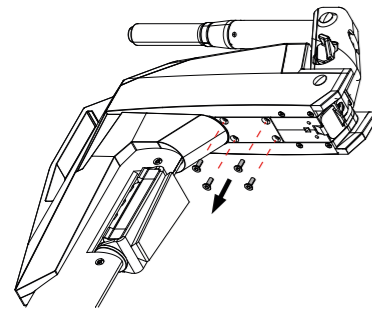
- 3.1. Remove the local clamp, if installed from the aft tiller. (Dia. 3.A)
- 3.2. Prepare the hydraulic adapter assembly by attaching the interface plate and spacer to the pivot mount plate and secure with the shoulder bolt and nylon locknut. (Dia. 3.B)
- 3.3. Unscrew the screws of the pivot blanking plate, and remove the pivot blanking plate. (Dia. 3.C)
- 3.4. Install the hydraulic adapter assembly with the screws onto the aft tiller. Apply Tefgel on each screw before installing screws. (Dia. 3.D)



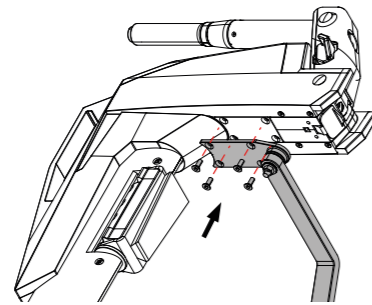
Dia. 3.E



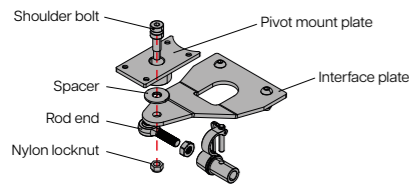
Dia. 3.F



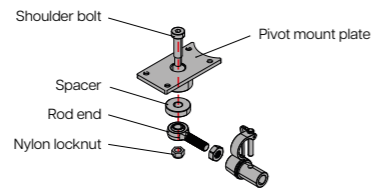
Dia. 3.G



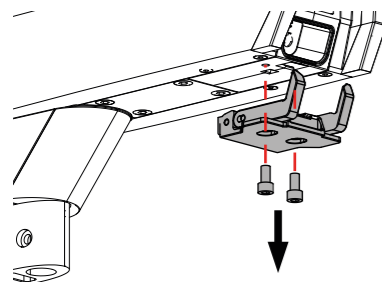
Dia. 3.H



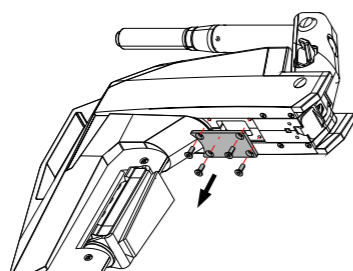
Dia. 3.I - Master assembly



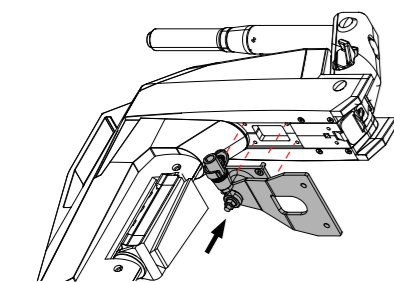
Dia. 3.J - Slave assembly



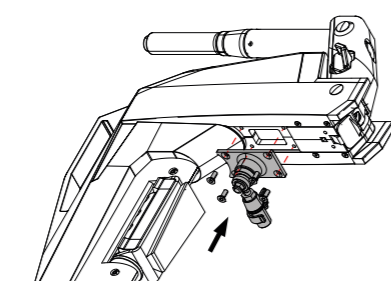
Dia. 3.K - Both OBMS



Dia. 3.L - Both OBMS



Dia. 3.M (Master OBM shown)



Dia. 3.N (Slave OBM shown)

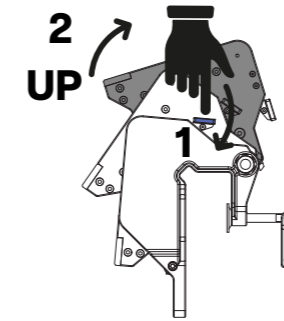
SINGLE CABLE ADAPTER

- 3.5. Remove the local clamp, if installed, from the aft tiller. (Dia. 3.E)
- 3.6. Prepare cable adapter assembly by attaching the steering link arm and spacer to the pivot mount plate and secure with the shoulder bolt and nylon locknut. (Dia. 3.F)
- 3.7. Unscrew the screws of the pivot blanking plate, leaving the plate in place. (Dia. 3.G)
- 3.8. Install the hydraulic adapter assembly over the blanking plate with the screws onto the aft tiller. Apply Tefgel on each screw before installing screws. (Dia. 3.H)

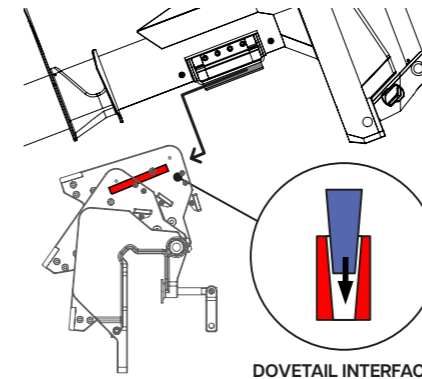
TWIN HYDRAULIC ADAPTERS

- 3.9. Prepare the hydraulic adapter assembly for the master OBM by attaching the interface plate and spacer to the pivot mount plate, together with the rod end, and secure with the shoulder bolt and nylon locknut. (Dia. 3.I)
- 3.10. Prepare the hydraulic adapter assembly for the slave OBM, by attaching the spacer and rod end to the pivot mount plate and securing with the shoulder bolt and nylon locknut. (Dia. 3.J)
- 3.11. Remove the local clamp, if installed, from the aft tiller of both OBMs. (Dia. 3.K)
- 3.12. Remove the pivot blanking plate from the aft tiller of both OBMs. (Dia. 3.L)
- 3.13. Install the pivot mount plate onto the corresponding aft tiller. Apply Tefgel on each screw before installing screws. (Dia. 3.M/N)

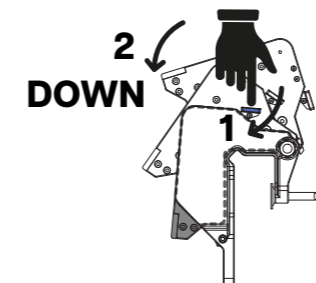
STEP 4 : INSTALLING THE OBM(S) TO THE OBM MOUNT



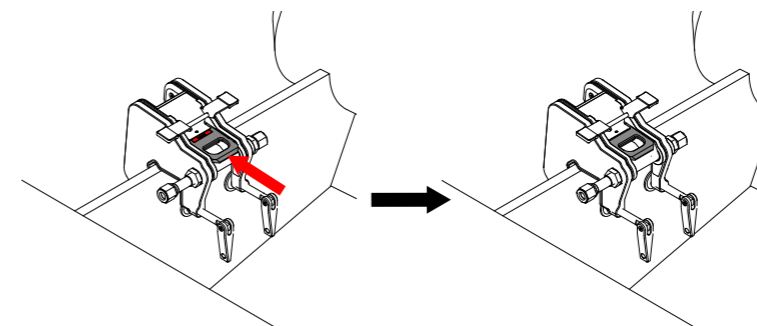
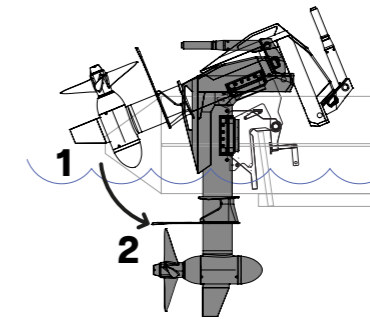
Dia. 4.A



Dia. 4.B



Dia. 4.C



UNLOCKED

LOCKED

Dia. 4.D

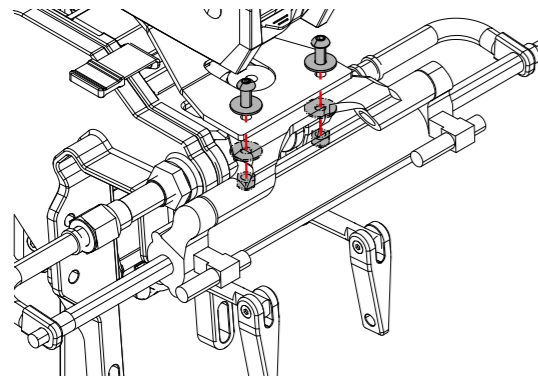
INSTALLING A SINGLE OBM

- 4.1. Press down on the trim lever to tilt the mount to the highest position to install the outboard. (Dia. 4.A)
- 4.2. With the outboard inside the boat, secure the outboard safety line to a fixed point in the boat before installing it. Aim the dovetail mount into the tapered receiver of the mount until you hear a positive click. (Dia.4.B)
- 4.3. Press down on the trim lever to lower the outboard into the water. (Dia. 4.C)
- 4.4. Important! -Lock the outboard to the mount by pushing in the locking handle as shown in the diagram. (Dia. 4.D)
- 4.5. Fold the tiller over the OBM.

INSTALLING TWIN OBMS

- 4.6. Install the OBMs as per single OBM installation above.

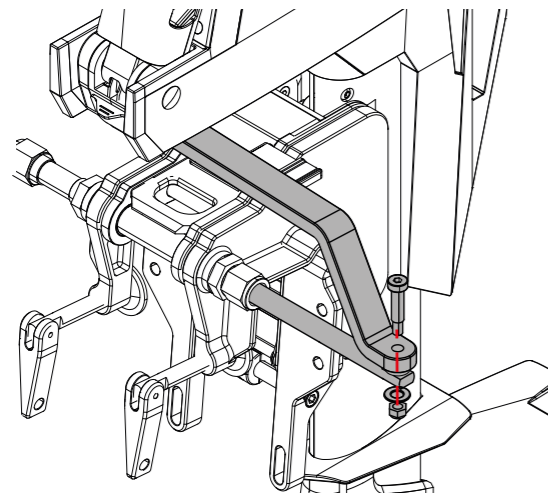
STEP 5 : CONNECTING THE STEERING ADAPTER TO THE STEERING SYSTEM



Dia. 5.A

■ SINGLE REMOTE STEERING SYSTEM (HYDRAULIC)

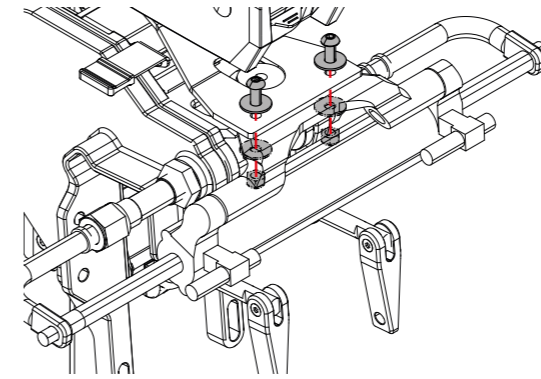
- 5.1. Center both the OBM and hydraulic steering cylinder and bolt the interface plate onto the hydraulic steering cylinder pivot plate. (Dia. 5.A)
- 5.2. Check that the OBM can be steered from hard port to hard starboard and back to hard port without obstruction. Should there be any obstruction, limit the maximum steering angle on the hydraulic cylinder.
- 5.3. Check that the OBM can be trimmed and tilted without obstruction.



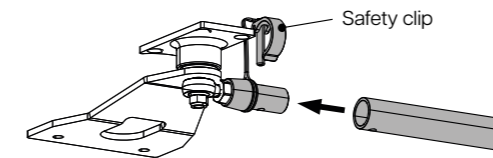
Dia. 5.B

● SINGLE REMOTE STEERING SYSTEM (CABLE)

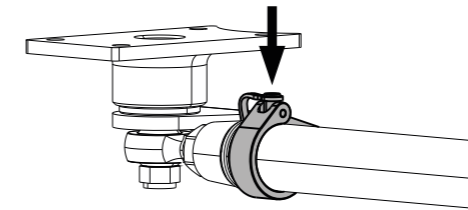
- 5.4. Align the link arm end with the cable steering push-pull rod and bolt the steering link arm onto the push-pull rod. (Dia. 5.B)
- 5.5. Check that the OBM can be steered from hard port to hard starboard and back to hard port without obstruction. Should there be any obstruction, consult your dealer.
- 5.6. Check that the OBM can be trimmed and tilted without obstruction.



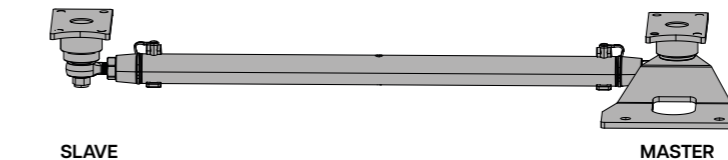
Dia. 5.C



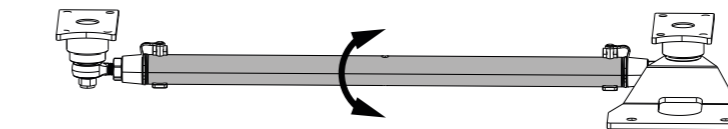
Dia. 5.D - safety clip not inserted



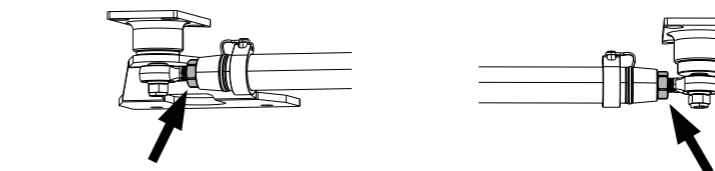
Dia. 5.E - safety clip fitted with pin fully inserted



Dia. 5.F - OBMS not shown



Dia. 5.G



Dia. 5.H

▲ TWIN REMOTE STEERING SYSTEM

- 5.7. Set both master and slave OBMs at the lowest trim angle.
- 5.8. Center both the master OBM and hydraulic steering cylinder and bolt the interface plate onto the hydraulic steering cylinder pivot plate. (Dia. 5.C)
- 5.9. Set both ends of the threaded rod ends to their innermost positions by turning the rod end locking nuts against the rod ends, then turning the rod ends in as far as they will go.
- 5.10. Connect the tie rod to the master OBM by removing the securing pin from the rod-end interface and sliding the tie rod over it. (Dia. 5.D)
- 5.11. Align the holes on the rod-end interface and tie rod and insert the securing pin, ensuring that the securing pin safety clip is in the closed position. (Dia. 5.E)
- 5.12. Connect the tie rod to the slave OBM in the same manner as described above. (Dia. 5.F)
- 5.13. Rotate the tie rod in both directions to adjust the length of the tie rod/ toe angle and center both OBMs if necessary. (Dia. 5.G)
- 5.14. When both OBMs are centered, tighten the rod end locking nut at both rod ends. Note that one end is using a left-hand thread. (Dia. 5.H)
- 5.15. Adjust the trim of both OBMs according to the boat trim/loading condition. Both OBMs should be set to the same trim angle.
- 5.16. Check that the OBMs can be steered from hard port to hard starboard and back to hard port without obstruction.
- 5.17. Check that at hard port/starboard, the starboard OBM propeller tip is at least 6 cm away from the port OBM motor case. Should there be contact between the OBMs and/or with the boat hull, do not operate the OBMs and consult your dealer.

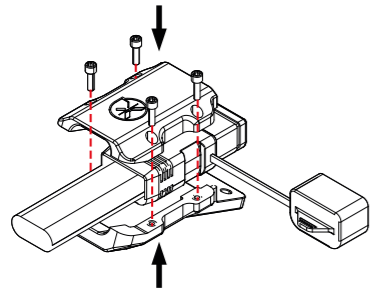
WARNING:
DISCONNECT THE TIE ROD WHEN TILTING EITHER OBM!
ONLY OPERATE BOTH OBMS AT THE SAME TRIM ANGLE!

STEP 6 : CONNECTING THE REMOTE POWER CABLE



INSTALLING THE REMOTE CABLE CLAMP

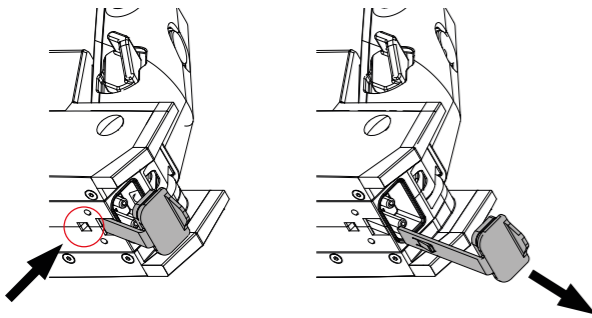
- 6.1. Ensure that the remote clamp is tightly fastened over the **female** connector of the power cable. (Dia. 6.A)



Dia. 6.A

REMOVING THE OBM CONNECTOR WEATHER CAP

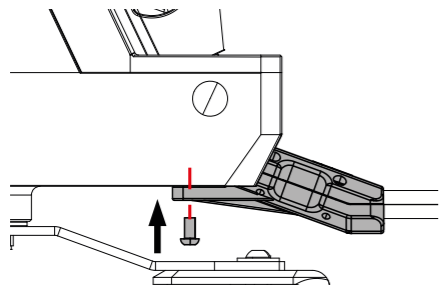
- 6.2. Remove the OBM connector weather cap by pushing in the retaining tab of the weather cap through the indicated hole with the end of an allen key. Pull the weather cap out completely. (Dia. 6.B)



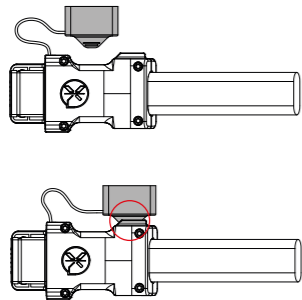
Dia. 6.B

SECURING THE CABLE CONNECTOR

- 6.3. Insert the power cable fully into the OBM.
- 6.4. Use the two screws provided from the local clamp to secure the remote clamp to the aft tiller. Apply Tefgel on each screw before installing screws. (Dia. 6.C)
- 6.5. Slot the power cable cover onto the remote cable clamp. (Dia 6.D)
- 6.6. Check that the OBM can be steered from hard port to hard starboard and back to hard port without snagging the power cable.



Dia. 6.C



Dia. 6.D



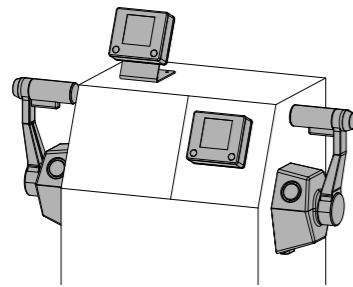
END OF OBM SET-UP

THROTTLE INSTALLATION

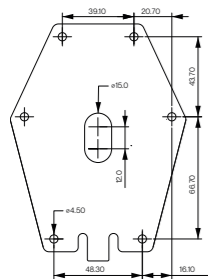
Follow the relevant icon for the installation applicable to your use case.

MT-1 TOP MOUNT THROTTLE 

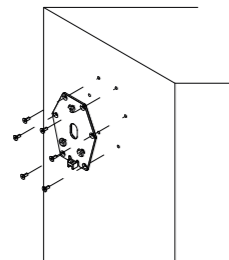
MT-2 SIDE MOUNT THROTTLE 



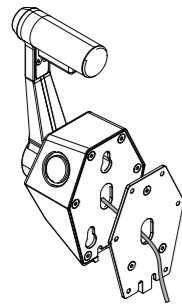
Dia. 7.J



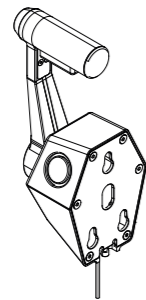
Dia. 7.K



Dia. 7.L

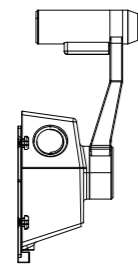
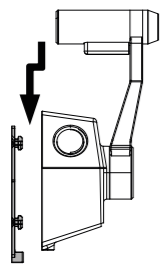


CONCEALED

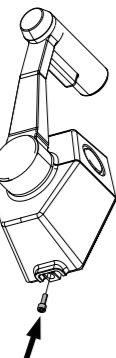


SURFACE

Dia. 7.M



Dia. 7.N



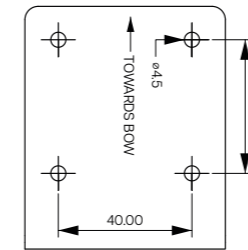
Dia. 7.O

◆ SIDE MOUNT THROTTLE (MT-2)

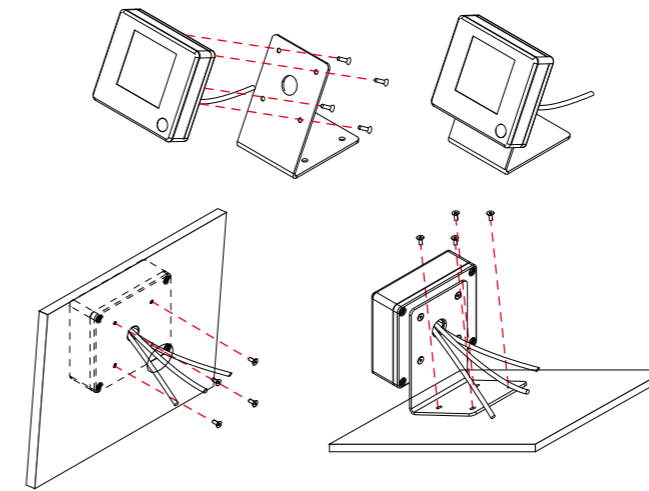
7.12. The MT-2 throttle can be mounted on either side of the console. The MT-2 display can also be mounted in two ways – directly onto the console or via the bracket provided. (Dia. 7.J)

INSTALLING THE THROTTLE UNIT

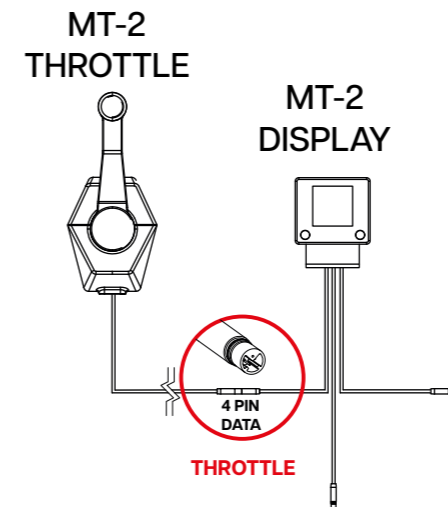
- 7.13. Using the drilling template provided, drill holes on the side of the console for the cable and screw holes of the side mount throttle interface plate. (Dia. 7.K)
- 7.14. Secure the side mount throttle interface plate on the side of the console with the provided screws. (Dia. 7.L)
- 7.15. Pass the side mount throttle cable through the hole in the console. Alternatively, the cable can be exposed at the base of the remote throttle and run on the surface of the console. (Dia. 7.M)
- 7.16. Attach the side throttle to the interface plate, and push downwards to engage the 3 guide pins. (Dia. 7.N)
- 7.17. Secure the side mount throttle to the interface plate with the screw provided. Apply Tefgel on the screw before installation. (Dia. 7.O)



Dia. 7.P



Dia. 7.Q

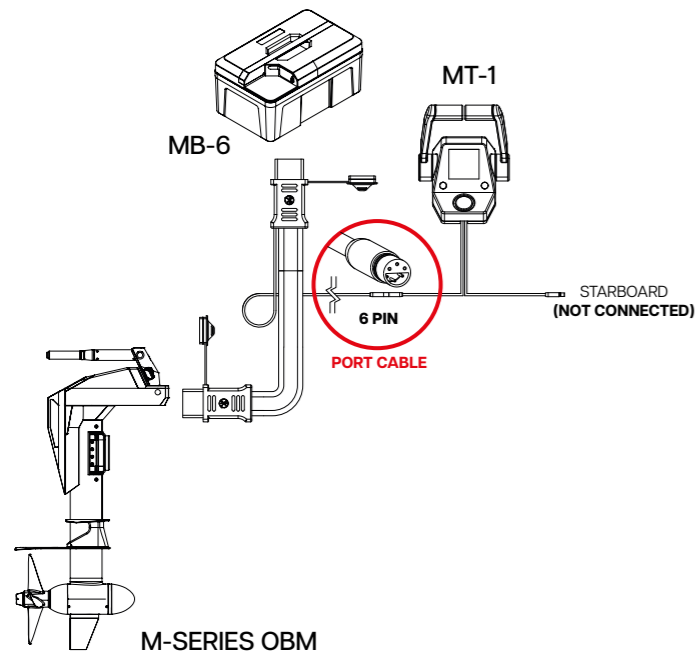


Dia. 7.R

INSTALLING THE DISPLAY UNIT

- 7.18. The MT-2 throttle can be used to operate a single or twin OBM installation. The Single OBM or Twin OBM mode will be automatically selected depending on whether one or two OBMs are connected to the MT-2.
- 7.19. The remote display can be mounted flush on the console or on the stand provided. Using the drilling template provided, drill holes on the top of the console for the cable and screw holes of the remote display or display stand. (Dia. 7.P)
- 7.20. Pass the remote display cables through the hole in the console. Alternatively, the cable can be run on the surface of the console using the display stand. Secure the remote display/display stand onto the console with the screws provided. (Dia.7.Q)
- 7.21. Connect the **4-pin connector** from the side mount throttle to matching connector on the remote display. (Dia. 7.R)

STEP 8 : CONNECTING THE REMOTE THROTTLE TO THE REMOTE CABLE



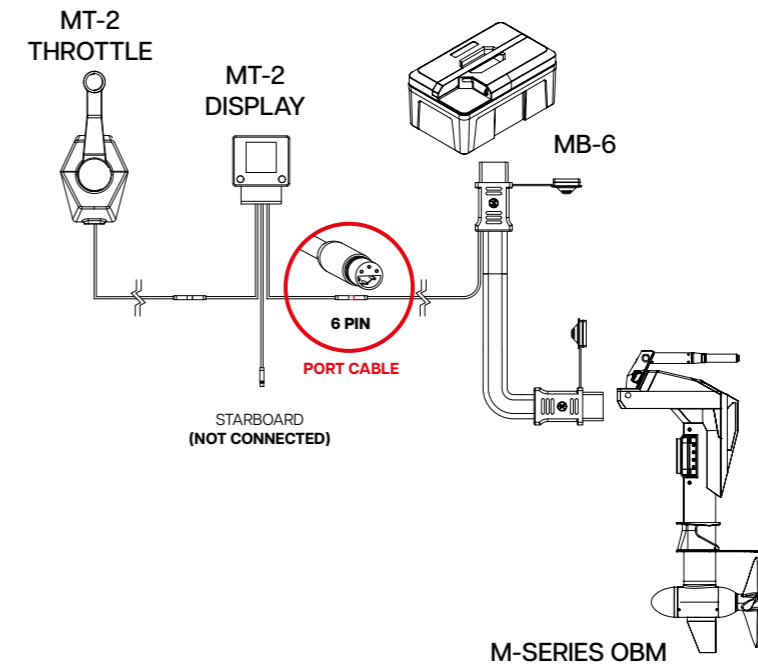
Dia. 8.A

TOP MOUNT THROTTLE (MT-1)

SINGLE OBM MODE

- 8.1. Ensure that the 6-pin connector from the remote power cable is connected to the 6-pin connector on the remote throttle cable labelled "Port" on the MT-1 throttle. (Dia 8.A)

Note: Connecting a single OBM to the 6-pin connector from the remote throttle labelled "Starboard" will not enable Single OBM mode.



Dia. 8.C

SIDE MOUNT THROTTLE (MT-2)

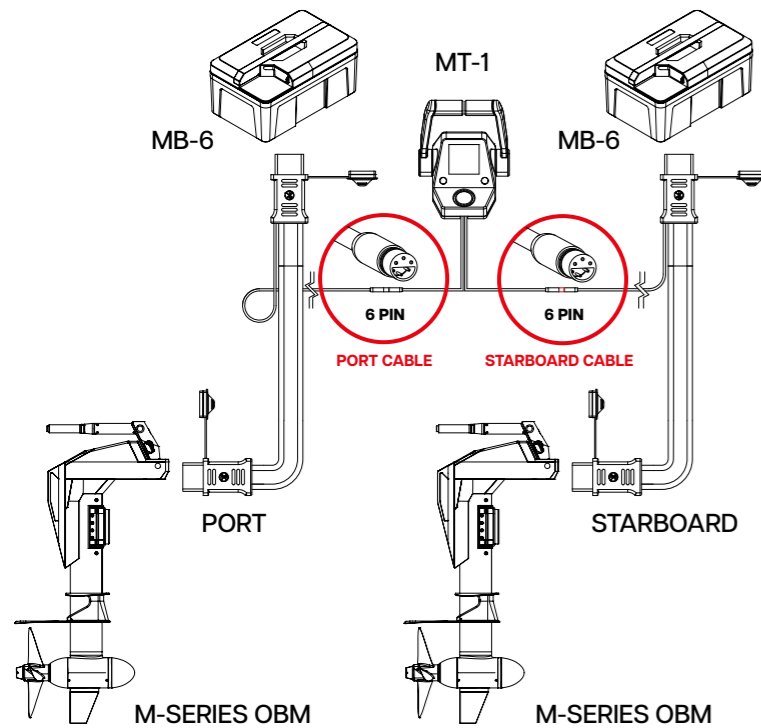
SINGLE OBM MODE

- 8.3. Ensure that the 6-pin connector from the remote power cable is connected to the 6-pin connector on the remote throttle cable labelled "Port" on the MT-2 Display. (Dia 8.C)

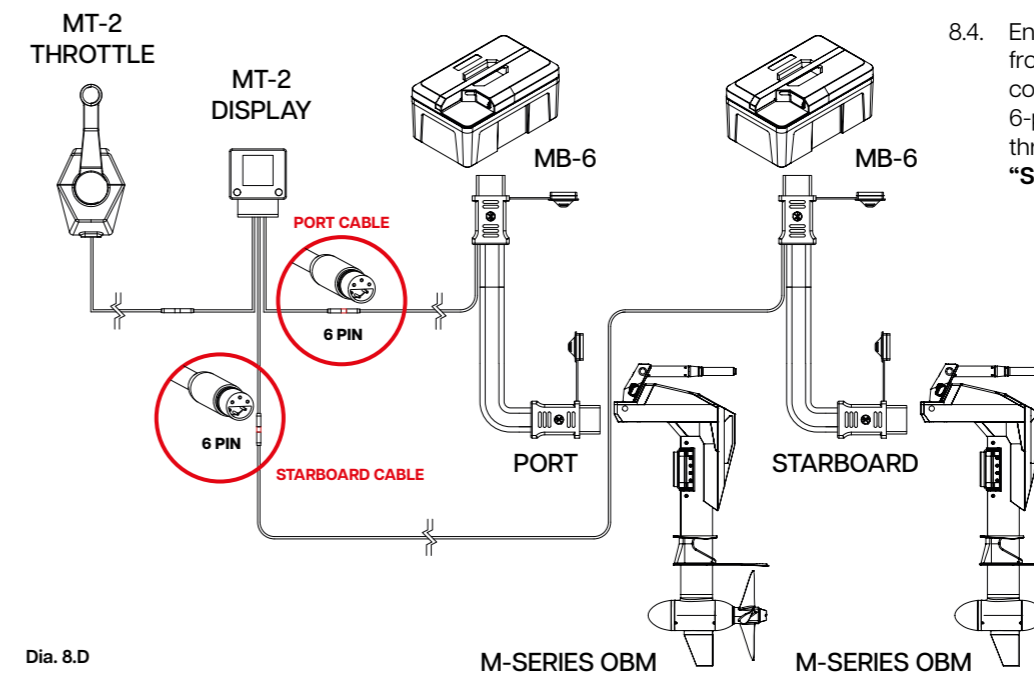
Note: Connecting a single OBM to the 6-pin connector from the remote display labelled "Starboard" will not activate Single OBM mode, but will instead activate Twin OBM mode, even if there is no OBM connected to the 6-pin connector from the remote display labelled "Port".

TWIN OBM MODE

- 8.2. Ensure that the 6-pin connector from the remote power cables are connected to the corresponding 6-pin connectors on the remote throttle cables labelled "Port" and "Starboard". (Dia 8.B)



Dia. 8.B

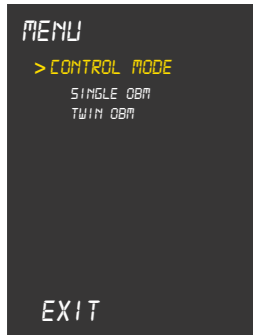
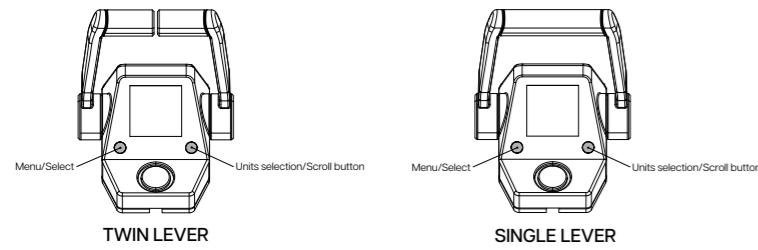


Dia. 8.D

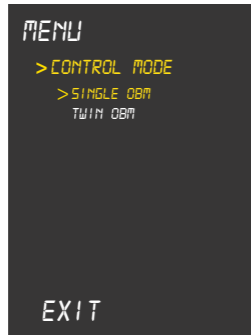
TWIN OBM MODE

- 8.4. Ensure that the 6-pin connector from the remote power cables are connected to the corresponding 6-pin connectors on the remote throttle cables labelled "Port" and "Starboard". (Dia 8.D)

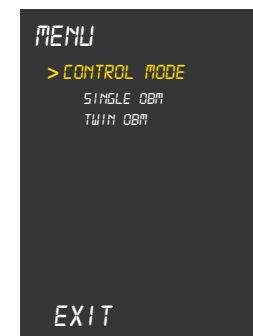
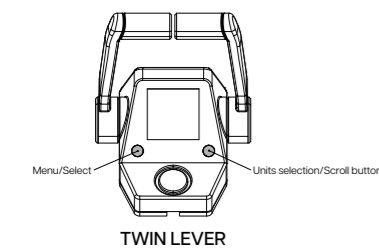
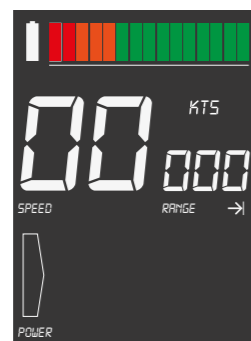
STEP 9 : SETTING UP THE REMOTE THROTTLE



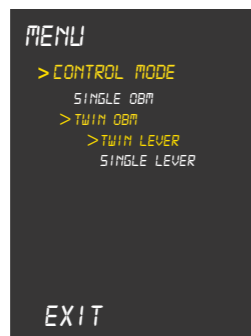
Dia. 9.A



Dia. 9.B



Dia. 9.C



TOP MOUNT THROTTLE (MT-1) SETTING CONTROL MODE

SINGLE OBM MODE

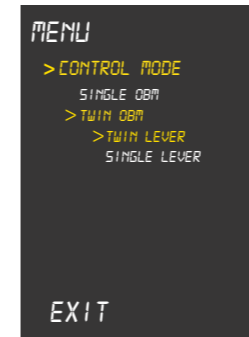
- 9.1. In Single OBM mode, only the Port lever and the OBM will be active.
- 9.2. To enter the menu, put the throttle to zero and remove the kill switch and tap the **Menu/Select** button.
- 9.3. Tap the **Scroll** button to move through the options and tap the **Menu/Select** button to select the **"Single OBM"** option. (Dia. 9.A)
- 9.4. Scroll to **"Exit"** and select to return to the main screen.
- 9.5. The display will show **a single battery level and power meter indicator**. (Dia 9.B)

TWIN OBM MODE

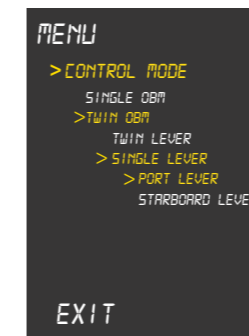
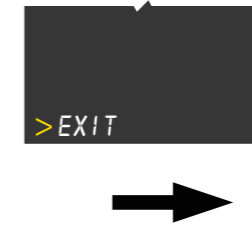
- 9.6. In Twin OBM mode, both OBMs can be controlled by the respective levers independently, or a single lever controlling both OBMs.

TWIN LEVER MODE

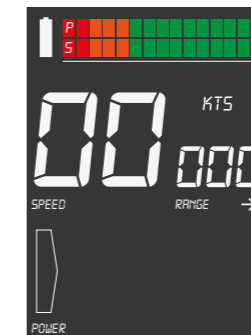
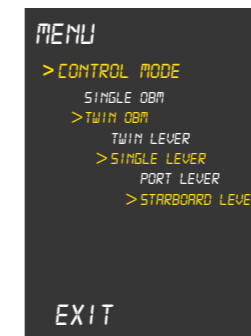
- 9.7. To enter the menu, put the throttle to zero and remove the kill switch and tap the **Menu/Select** button.
- 9.8. Tap the **Scroll** button to scroll down the options and tap the **Menu/Select** button to select the **"Twin OBM"** option, followed by **"Twin Lever"**. (Dia. 9.C)



Dia. 9.D



Dia. 9.E

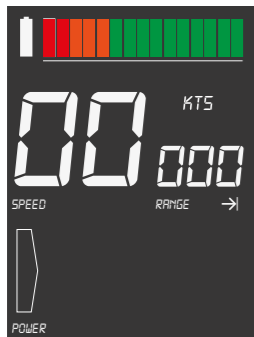


- 9.9. Scroll to **"Exit"** and select to return to the main screen.
- 9.10. The display will show **both Port and Starboard battery level and power meter indicators**. (Dia 9.D). In this mode, each OBM is controlled independently by its corresponding lever, i.e. Port OBM is controlled by the Port lever, and likewise for Starboard.

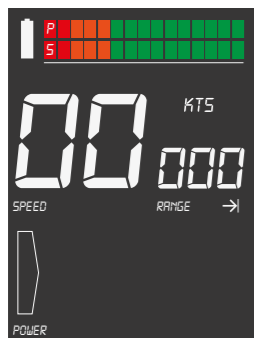
SINGLE LEVER MODE

- 9.11. To enter the menu, put the throttle to zero and remove the kill switch and tap the **Menu/Select** button.
- 9.12. Tap the **Scroll** button to scroll down the options and tap the **Menu/Select** button to select the **"Twin OBM"** option, followed by **"Single Lever, and choose either "Port Lever" or "Starboard Lever"**. (Dia. 9.E)
- 9.13. Scroll to **"Exit"** and select to return to the main screen.
- 9.14. When either Port Lever or Starboard Lever mode is selected, **the display will show both Port and Starboard battery level indicators and a single power meter indicator**. (Dia 9.E). In this mode, the selected lever will control both OBMs, and the other lever is inactive.

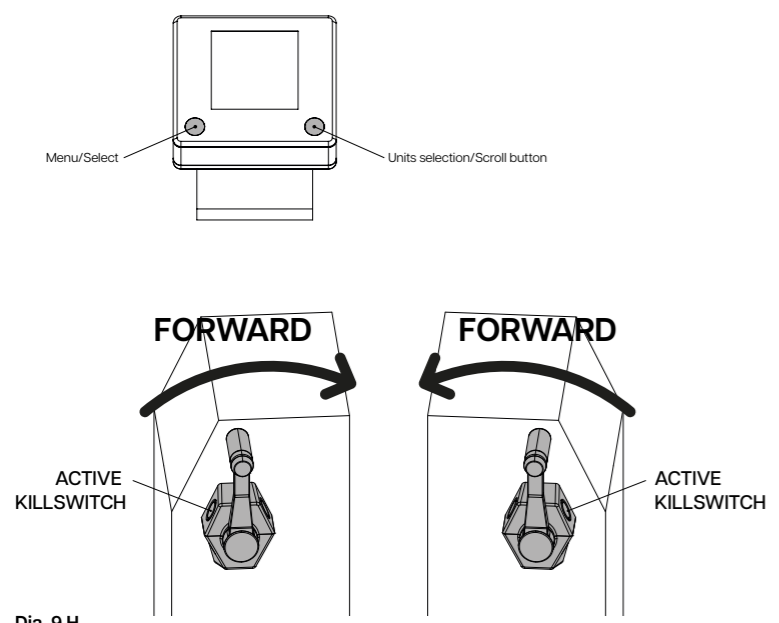
NOTE: In Port Lever mode, if the Port battery is off, while the Starboard battery is on, the Starboard OBM can be operated by the Port lever but the power level will not be displayed on the power meter indicator. In Starboard lever mode, vice versa.



Dia. 9.F



Dia. 9.G



Dia. 9.H

◆ **SIDE MOUNT THROTTLE (MT-2)
SETTING CONTROL MODE**

SINGLE OBM MODE

- 9.15. Single OBM mode is **automatically** activated when the OBM is connected to the 6-pin connector from the remote display labelled "Port".
- 9.16. The display will show a single battery level and power meter indicator. (Dia 9.F)

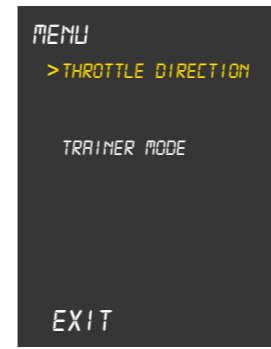
TWIN OBM MODE

- 9.17. Twin OBM mode is **automatically** activated when one OBM is connected to the 6-pin connector from the remote display labelled "Port" and the other OBM is connected to the 6-pin connector from the remote display labelled "Starboard".
- 9.18. The display will show both port and starboard battery level indicators and a single power meter indicator. In this mode, the lever will control both OBMs. (Dia 9.G)

Note: Connecting a single OBM to the 6-pin connector from the remote display labelled "Starboard" will not activate Single OBM mode, but will instead activate Twin OBM mode, even if there is no OBM connected to the 6-pin connector from the remote display labelled "Port".

SETTING THROTTLE DIRECTION

- 9.18. The forward direction of the throttle lever is determined via the menu on the display. The forward direction of the throttle corresponding to the two throttle mounting positions (Dia. 9.H).



Dia. 9.I



- 9.19. Access the menu by tapping the **Menu/Select** button once. The menu can only be accessed when the kill switch is off, for safety reasons. Tap the **Scroll** button to move down the options and tap the **Menu/Select** button to select the "Position" option. Select "Position 1" or "Position 2" based on the intended direction of travel. (Dia. 9.I).

***IMPORTANT SAFETY NOTICE**
Failure to set the correct position can result in the boat moving in the opposite direction as intended. Always check that the throttle direction is correct before driving the boat.

SETTING TRAINER MODE

- 9.20. The MT-2 throttle has two kill switch positions which can be activated via the Trainer Mode in the menu.
- 9.21. When Trainer mode is ON, both kill switches must be ON, in order to run the OBM. Taking either kill switch OFF while the OBM is running will stop the OBM. Operation can only resume after the throttle has been returned to zero and both kill switches are ON. This mode is typically used on Trainer boats, where both the trainee and trainer each have one kill switch.
- 9.22. When Trainer mode is OFF, only one kill switch must be ON, in order to run the OBM. Taking the kill switch OFF while the OBM is running, will stop the OBM. Operation can only resume after the throttle has been returned to zero and one kill switch is ON. The OBM will not run if two kill switches are ON.

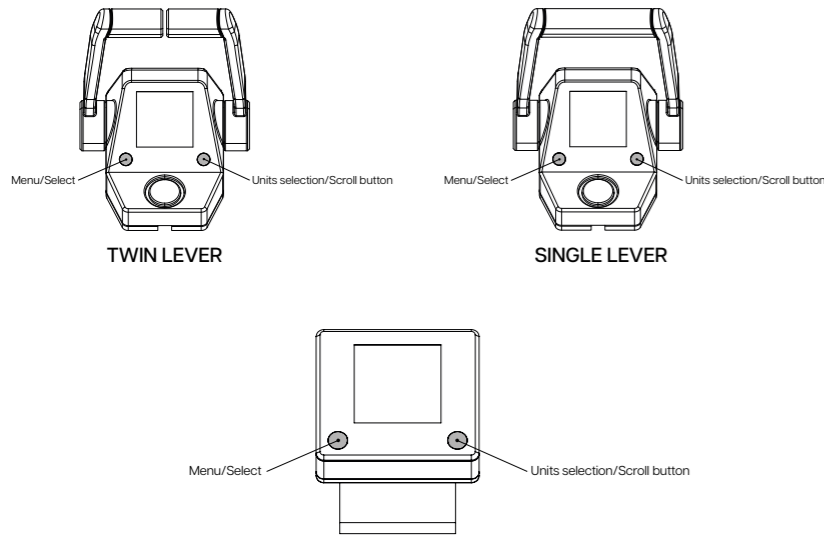


Dia. 9.J



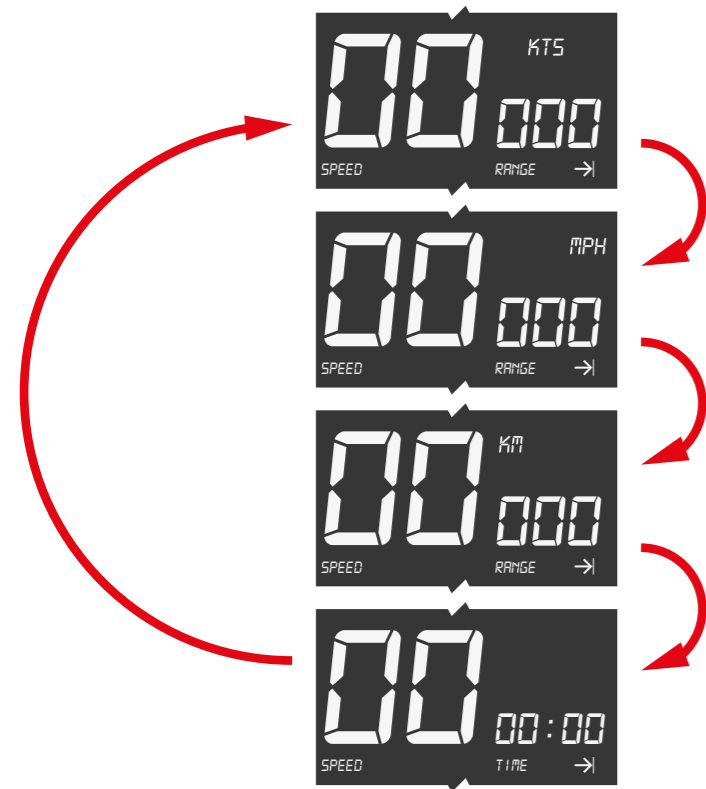
- 9.23. To select the Trainer Mode, the menu can only be accessed when the kill switch is off, for safety reasons. Tap the **Scroll** button to move down the options and tap the **Menu/Select** button to select the "Trainer Mode" option. Select "On" or "Off" depending on the number of active kill switches required. (Dia. 9.J)

STEP 10 : SETTING UNITS AND TIME REMAINING



SETTING UNITS AND TIME REMAINING

- 10.1. In the main screen, tapping the **Scroll** button will change the displayed units for speed/range remaining and the run time remaining, based on the current speed and remaining battery level. If two batteries are connected, the lower battery level will be used in the range and time remaining calculations. (Dia 10.A)



Dia. 10.A

TROUBLESHOOTING

A fault/warning message(s) will appear on the display in the event of an outboard/battery fault or warning. The messages that appear on the remote throttle screen are the same as what would appear on the OBM screen when used with the tiller.

OPERATING FAULT TABLE

Description of Observation	Likely Cause	Solution
Remote throttle screen does not light up or lights up intermittently.	Loose connector.	Check that the power cable connectors are firmly inserted into the battery and OBM. Check that the remote throttle cable is firmly connected to the remote power cable.
For the top mount remote, the port lever controls the starboard OBM and vice versa.	The remote power harness connectors are connected in reverse.	Swap the 6-pin remote throttle connectors.
Attaching the killswitch to the OBM tiller does not change the OBM screen from "READY" to "LIVE" / tiller throttle is inactive.	Killswitch is not placed on the remote throttle. In remote throttle configuration, the tiller killswitch and throttle are deactivated.	Place killswitch on the remote throttle and use the remote throttle.
The remote steering interface plate does not fit the hydraulic steering cylinder.	The hydraulic steering cylinder design and mounting holes are not the same as the recommended hydraulic steering cylinder.	Consult your Momentum dealer.

USER NOTES

